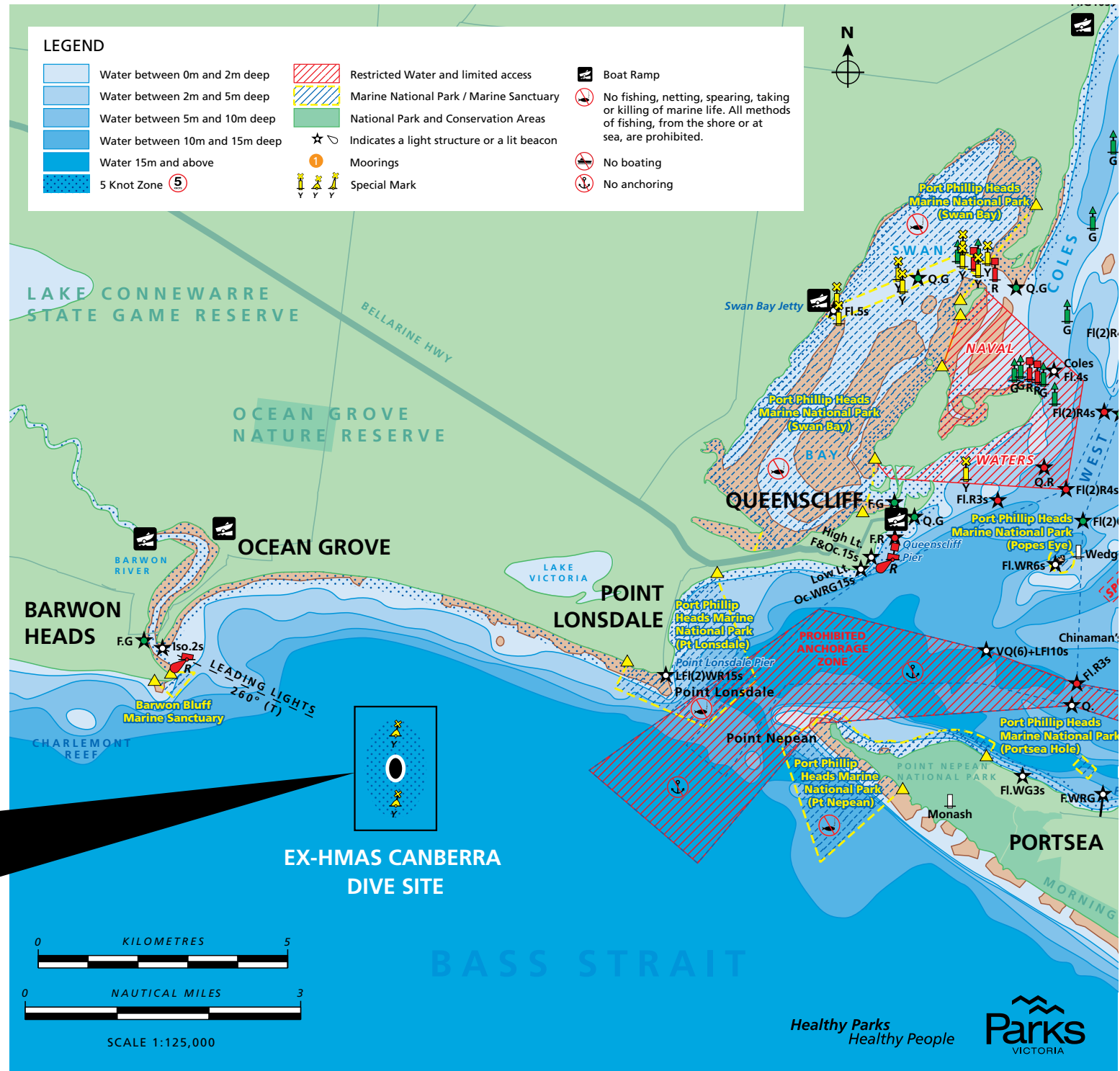
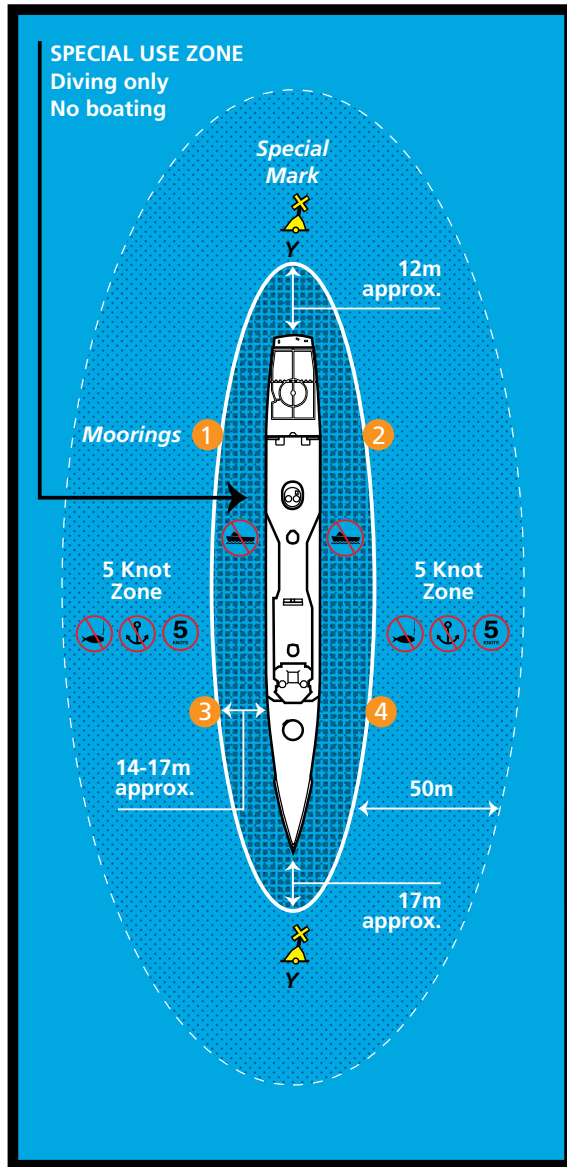
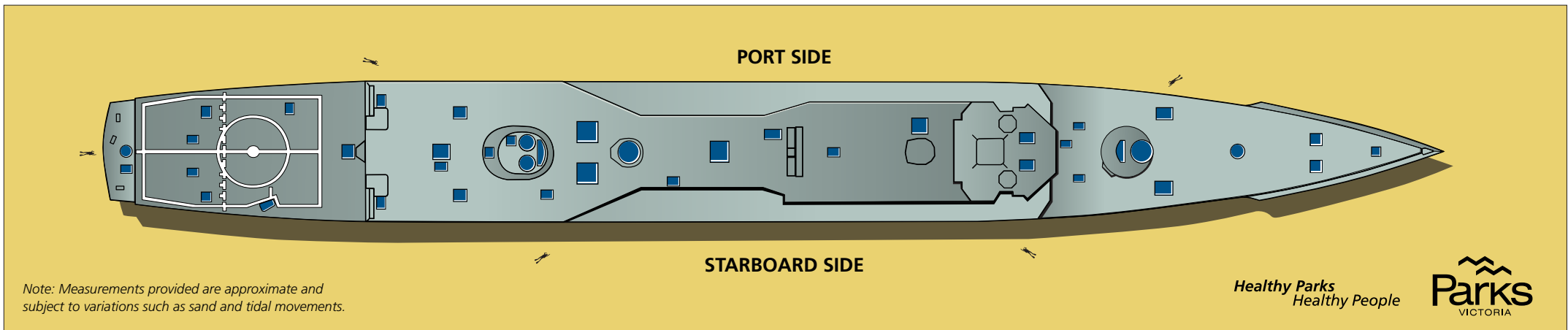
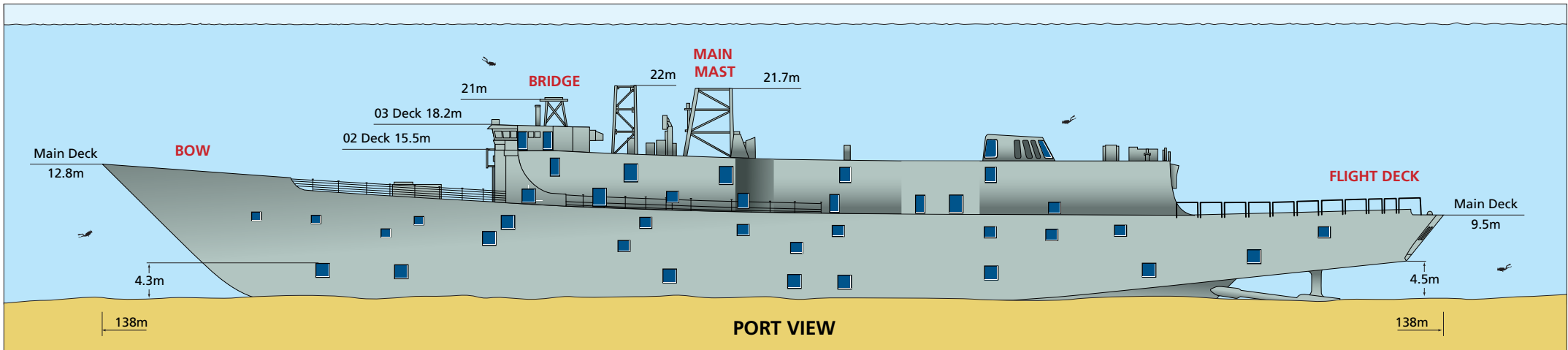
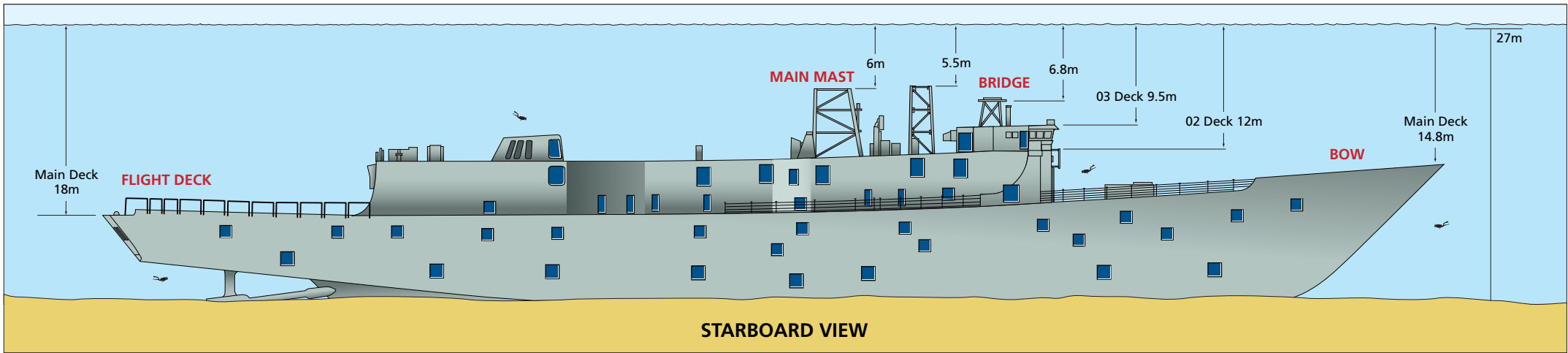


ex-HMAS Canberra Dive Site

This is NOT a navigation chart. This map is provided as a guide only and is not intended for navigational use. For navigation of Port Phillip, Chart AUS 143 should be consulted. Notice to mariners are issued by Parks Victoria and published on www.parkweb.vic.gov.au





Note: Measurements provided are approximate and subject to variations such as sand and tidal movements.