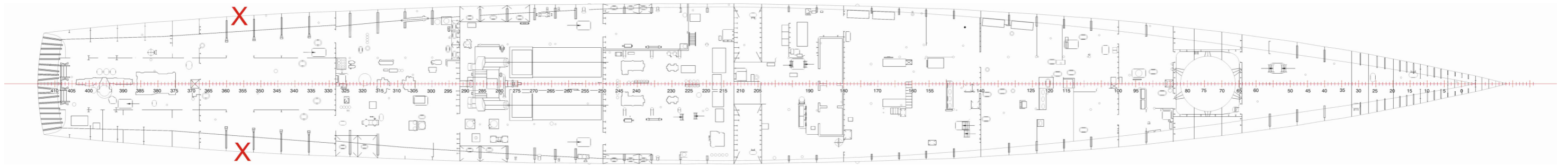
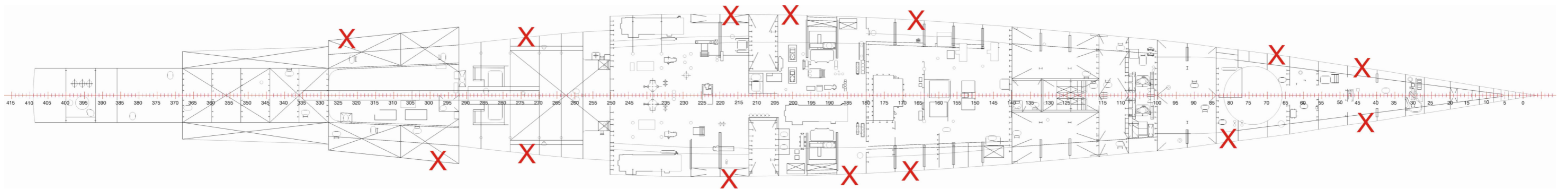


SCUTTLING DESIGN - Ex HMAS CANBERRA

EX HMAS CANBERRA SCUTTLING CHARGE POSITIONING (X)

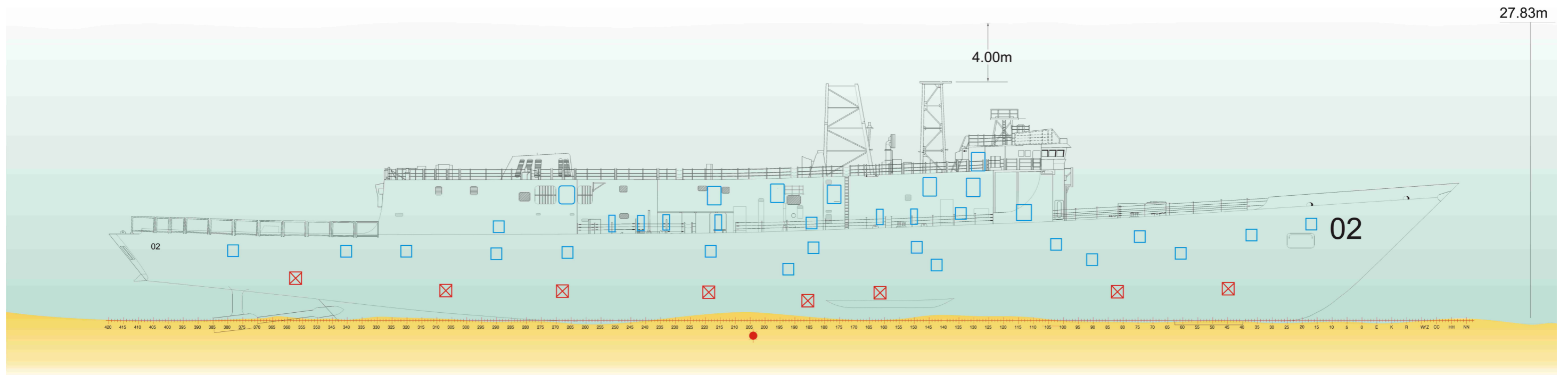




3 Deck



4 Deck

EX HMAS CANBERRA SCUTTLING OPENINGS (Pre-Cut and Explosive cut openings)



- EXPLOSIVE CUTTING CHARGE HOLES 
- DIVER ACCESS CUT HOLES 

Starboard side shown – Port side is similar